

September 26, 2022

To: Abutters of Third Avenue in Somerville, Massachusetts

Cc: B. Conway  
J. Jun  
A. Mirra  
G. Schoch  
I. Maia – City of Somerville  
B. Postlewaite – City of Somerville  
NSPB – TOWARDEX  
File

Re: **Third Avenue Street Improvement Project**

Dear Abutters of Third Avenue,

In coordination with the City of Somerville Engineering Division and on behalf of TOWARDEX (Project Owner), we will be repaving Third Avenue as follows:

**Dates of Construction (Weather Permitting):** Monday, October 17 – Friday, October 28

**Location:** City owned section of Third Avenue – Inner Belt Road to front of MBTA GLX Vehicle Maintenance Facility

**Work Hours:** 8AM – 3:30PM

**Approximate Construction Scope of Work:**

- **Monday, October 17:** Cold planing of roadway to depth of 2 inches. Mill the existing road surface to prepare for repaving; curb to curb.
- **Wednesday, October 19:** Adjust and repair manholes, catch basins and gate boxes as needed. Reconstruct sidewalks at the intersection of Inner Belt Road and install two ADA-compliant handicap sidewalk ramps.
- **Week of October 24:** Final paving.

**Please Note:**

- **NO PARKING** will be marked and enforced.
- While access will be maintained for abutters (where possible), through traffic will be restricted during work hours.
- We request that all abutters park their vehicles outside of the work zone on the marked day or the night before. We will do our best to maintain driveway access, but this may not be possible at all times.
- Please obey all detours, No Parking signs, and posted signs and flashing message boards. We thank you for your cooperation.
- If you have any questions or concerns, please contact:  
TWDX Infrastructure: (617) 863-8325 or via email at [plantmaster@towardex.com](mailto:plantmaster@towardex.com)  
City of Somerville: 311 or (617) 666-3311 (if outside the City)

This street improvement work is being performed as part of the **Third Avenue Interconnection** utility project by TOWARDEX. For more information about this project, you can visit online at the following URL, or scan the below QR Code:

<https://infrastructure.twdx.net/ThirdAve>



September 26, 2022

To: Members of the Joint Trench Partners System at Inner Belt

Cc: B. Conway  
J. Jun  
A. Mirra  
G. Schoch  
I. Maia – City of Somerville  
B. Postlewaite – City of Somerville  
B. Whitaker – Bay State  
M. Wiemer – Lumen  
C. Cremers – Zayo  
R. Moran – Zayo  
File

Re: **Third Avenue Street Improvement Project**

Dear Members of the Joint Trench Partners,

This letter is to notify you that in Somerville, Massachusetts, TWDX Infrastructure (a wholly owned subsidiary of TOWARDEX) is repaving Third Avenue and a portion of Inner Belt Road at the intersection. The work is being performed under coordination and supervision from the City of Somerville Engineering Division, and the timeframe of the construction (weather permitting) is from **Monday, October 17 to Friday, October 28**.

You're being notified because you're a telecommunications company who is a tenant of the **Level 3 – MFN Joint Trench Partners (JTP) System** with facilities installed within the Zayo-owned and operated duct system in the area.

For the street improvement project, TOWARDEX and Zayo have jointly agreed to replace all telecommunications manhole covers on Third Avenue and on portion of Inner Belt Road at the intersection. Affected Zayo manholes are identified as follows:

Cast Iron Structure	Approximate Location	Work Required
Zayo MH SOM8A	Inner Belt Rd at intersection w/ Third Ave	Replace manhole frame and cover
Zayo MH SOM8C	Third Avenue, ~115 ft down range	Replace manhole frame and cover
Zayo MH SOM8D	Third Avenue, ~353 ft down range	Replace manhole frame and cover

A contractor approved by TWDX Infrastructure and Zayo will be performing the casting replacement work for the above listed manholes. **We ask that JTP members coordinate all entry and access in advance with Zayo representatives for manhole quality inspection**, so that your work can be best coordinated during the street construction.

**Furthermore, TWDX Infrastructure will be rebuilding sidewalks at the intersection during the Street Improvement Project**—please do not park equipment or otherwise obstruct crews' access to sidewalks. Any vehicles violating No Parking restrictions at the roadwork area may be towed.

If you have any concerns or questions, you may contact us at (617) 863-8325 or via email at [plantmaster@towardex.com](mailto:plantmaster@towardex.com). This street improvement work is being performed as part of the **Third Avenue Interconnection** utility project by TOWARDEX. For more information about this project, you can visit online at the following URL, or scan the below QR Code:

<https://infrastructure.twdx.net/ThirdAve>



September 20, 2022

**VIA E-MAIL**

To: Network Siting Policy Board

Cc: B. Conway  
J. Jun  
File

Re: **Third Avenue Street Improvement Project**

Dear Board Members,

As you know, the Network Siting Policy Board (NSPB) acting on behalf of TOWARDEX Technologies International, Inc., had issued a Directive to TWDX Infrastructure, LLC (the “Joint Trench Administrator”), a wholly owned subsidiary of TOWARDEX, to develop a Street Improvement Project Plan for Third Avenue in Somerville, Massachusetts. The goal of this Street Improvement Project is to restore the public right-of-way disturbed by the construction works of **C15A2 Third Avenue Interconnection** utility project of the Hub Express Program, and to upgrade roadway facilities in partnership with the City of Somerville in our commitment to the communities we serve.

The Joint Trench Administrator was tasked with the following: (i) work with our project engineers and trade partners to develop a comprehensive street improvement plan within the allotted budget, and (ii) engage with the City of Somerville’s Department of Infrastructure and Asset Management (IAM) to review and provide guidance on our plans to ensure that our works are in compliance with Somerville’s accessibility and roadway design standards, local statutes and governmental codes for public’s safe use of the right-of-way.

In accordance with the above tasks, the **Third Avenue Street Improvement Project Plan** includes three major items:

- (i) Mill the entire City-owned section of roadway curb-to-curb by cold planing two inches from the top surface, and then repave the street upon conclusion of below listed additional works.

The work also includes a portion of Inner Belt Road at the intersection. **Total area to be milled and repaved is 22,900 sq. ft.**

- (ii) Reconstruct sidewalks on Inner Belt Road at the intersection with Third Avenue and install two ADA compliant **Type II Pedestrian Ramps** to improve accessibility and enhance public safety. Existing curbs will be disposed of, and new granite curbs will be installed for new sidewalk constructions.
- (iii) Readjust and reinstall deteriorated manholes and cast-iron structures on Third Avenue. The project team has determined that following manholes and cast-iron structures will need to be readjusted or otherwise repaired during the roadwork:

<b>TWDX Manholes</b>	C19BA and C15A2 HEX manholes along Inner Belt Road and Third Avenue	Readjust & replace MH covers as required. New TOWARDEX branded MH covers to be installed.
<b>Zayo Manholes</b>	MH SOM8A, SOM8C, SOM8D along Inner Belt Road and Third Avenue	Replace frame and cover on all of them. Zayo will provide new Zayo branded MH frame & cover.
<b>City of Somerville Storm Drain Manholes</b>	3 of them along Third Avenue	Readjust frame
<b>Buried Storm Drain Manhole</b>	At end of Third Avenue in front of MBTA GLX Vehicle Maintenance Facility.	Expose buried manhole, set new City of Somerville branded MH frame and cover. Coordinate with Somerville IAM and Water & Sewer.
<b>City of Somerville Water Main Gate Valves</b>	At least 1 needing readjustment on Third Avenue as identified by the project engineer.	Readjust gate valve as required, coordinate with Water & Sewer Department.
<b>National Grid Gas Gate Valves</b>	At least 1 needing readjustment and repair identified by the project engineer and National Grid Damage Prevention inspector.	Coordinate with National Grid to implement site repairs during roadwork.

City of Somerville IAM has reviewed and provided feedback on the Street Improvement Project Plan for TOWARDEX Hub Express Program activities in Third Avenue. The project plan as provided and reviewed with the City is attached hereto under Exhibit A.

Furthermore, due to rising inflationary costs and unanticipated increases in project scope (for example, additional work to reconstruct sidewalks at the intersection), the Project Estimator has determined that street improvement works herein will exceed ROW Restoration Budget for the C15A2 Third Avenue Interconnection project. Below is the new revised estimate submitted to TOWARDEX corporate finance for approval and issuance of Notice to Proceed and Purchase Order:

Task	Original Estimate	New Revised Estimate
Curb-to-curb milling and repaving of Third Avenue (520' from Inner Belt Rd.)	\$176,282	<b>\$194,650</b>
Manhole repairs and readjustments	\$8,400	<b>\$9,810</b>
Sidewalk reconstruction and accessibility improvements at intersection with Inner Belt Road	\$0 <i>Not included in original plans</i>	<b>\$21,100</b>
Contingency Budget for Change Orders and Differing Site Conditions	\$25,503	<b>\$11,450</b>
Engineering and TTCP (Temporary Traffic Control Plan) <i>Includes costs of engineering services, project management, permits, police details and hiring of traffic control vendor to erect construction roadwork signs, cones, barriers and flagging to provide work zone protection.</i>	\$0 <i>Original plan assumed for traffic control to be covered on T&amp;M basis from Contingency Budget for Change Orders.</i>	<b>\$26,400</b>
<b>Sub-total</b>	<b>\$210,185</b>	<b>\$263,410</b>

The Third Avenue Street Improvement Project will exceed the original C15A2 ROW Restoration Budget by an additional \$53,225. However, the project team was able to secure total savings of \$45,845 from both value engineering efforts and repossession of unclaimed budget from Lateral Constructions, allowing us to fund most of the cost increases in ROW Restoration. **The total budget of \$1.17 million for C15A2 Third Avenue Interconnection project is unlikely to be exceeded by significant amount.** Upon conclusion of the project, the Project Estimator will provide an updated accounting of costs in its closeout report to NSPB.

Having received approvals from both TOWARDEX corporate and City of Somerville IAM on construction plans, we have tentatively agreed with the City to commence roadway construction on **October 17, 2022**. As such, the Joint Trench Administrator will begin pulling necessary safety and construction permits and notify utilities in accordance with MGL c.82 § 40 to prepare for construction. Abutters and utility owners on the street will also be notified in writing via Abutter Notices to inform them of the street construction.

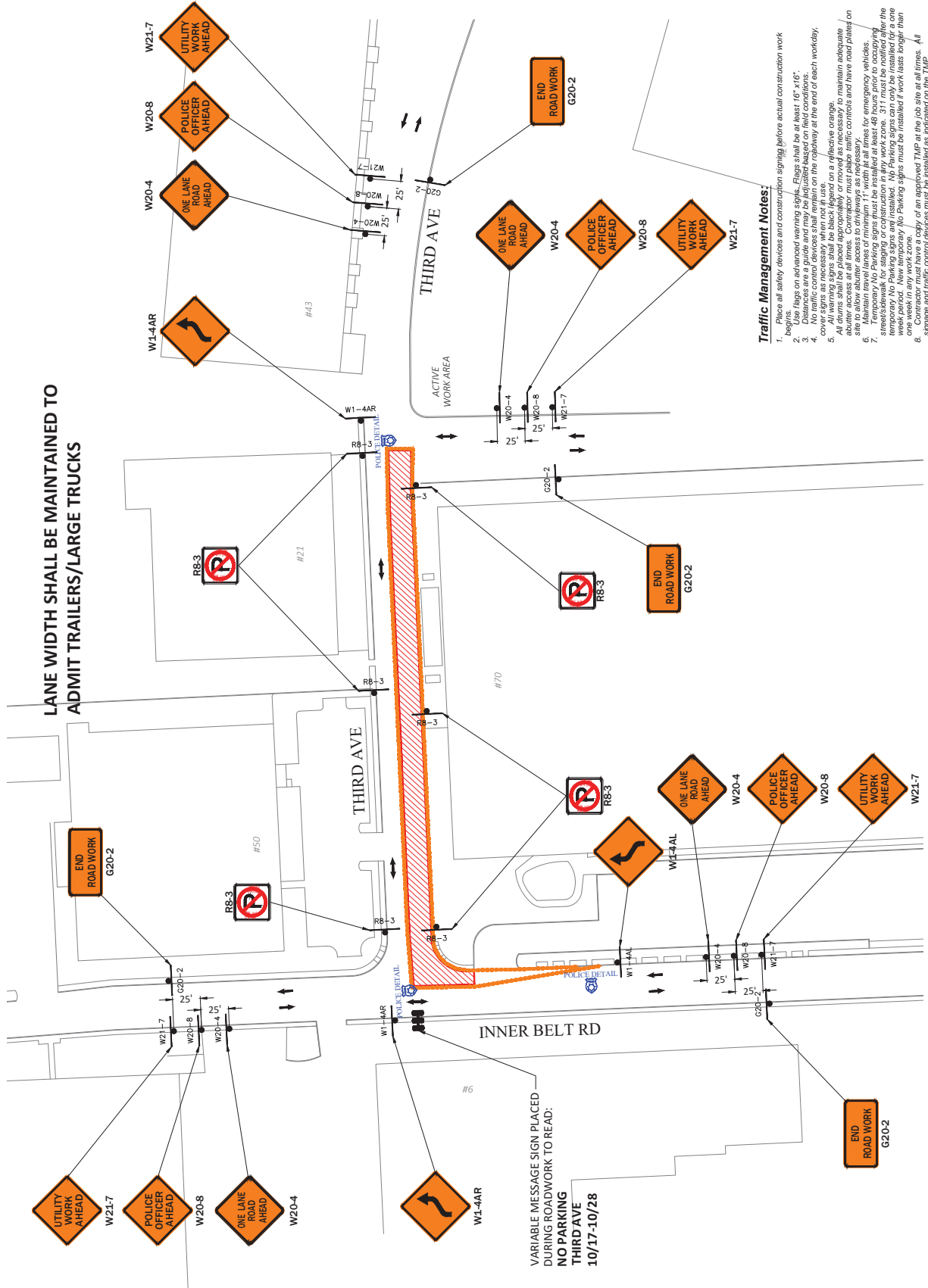
If you have any questions or concerns, please feel free to contact me.

Sincerely,



Gavin R. Schoch  
General Manager

LANE WIDTH SHALL BE MAINTAINED TO  
ADMIT TRAILERS/LARGE TRUCKS



VARIABLE MESSAGE SIGN PLACED  
DURING ROADWORK TO READ:  
**NO PARKING  
THIRD AVE  
10/17-10/28**

**Traffic Management Notes:**

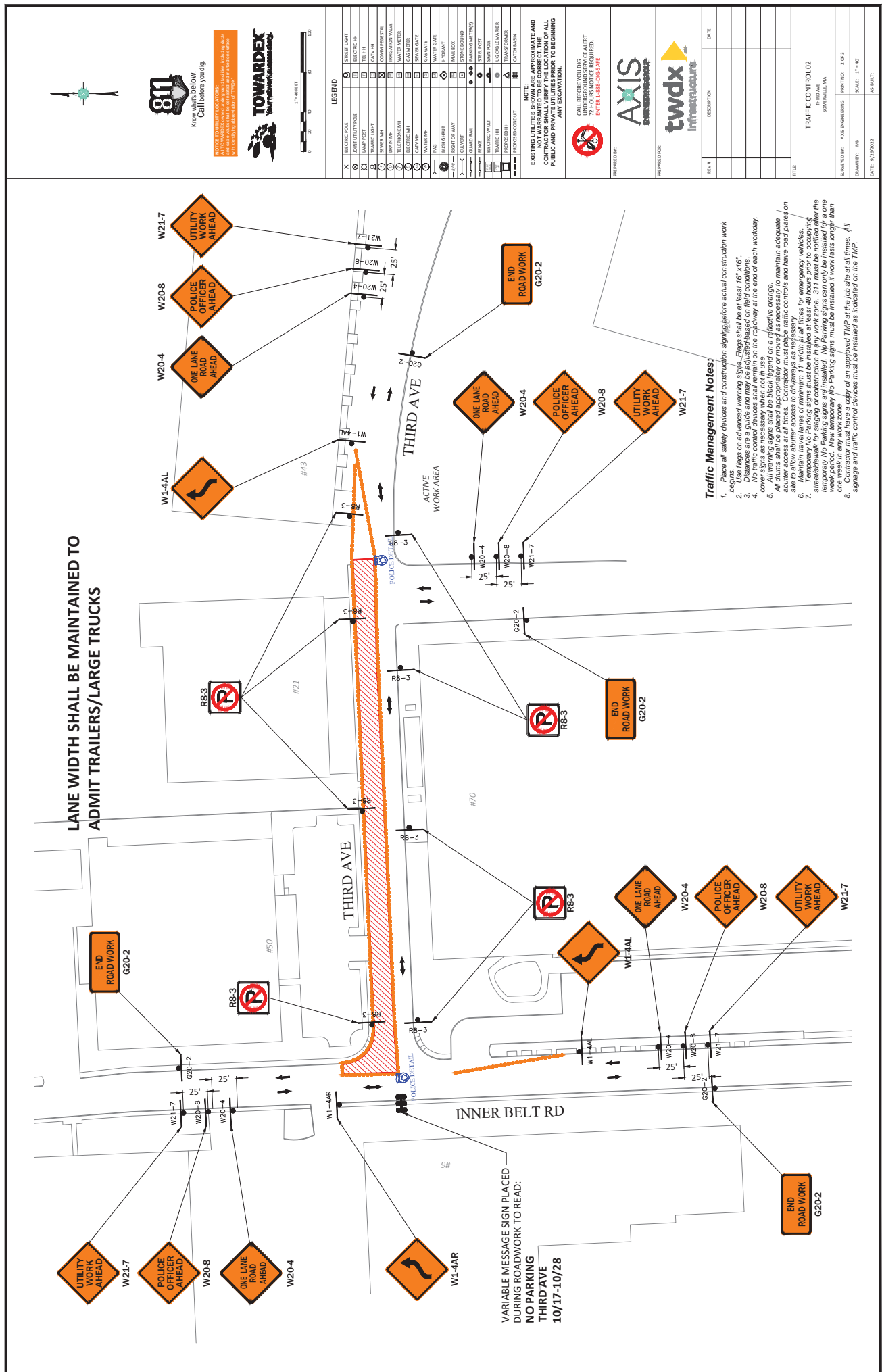
1. Place all safety devices and construction signing before actual construction work begins.
2. Use flags on advanced warning signs. Flags shall be at least 16" x 16".
3. Distances are a guide and may be adjusted based on field conditions.
4. All signs shall be placed at the beginning of the roadway at the end of each workday.
5. All warning signs shall be black legend on a reflective orange.
6. All signs shall be placed at the beginning of the roadway at the end of each workday.
7. Maintain one-way traffic flow at all times. Contractor must place traffic controls and have road plates on site to allow abutment access to driveway as necessary.
8. Maintain one-way traffic flow at all times for emergency vehicles.
9. Maintain one-way traffic flow at all times for emergency vehicles.
10. Temporary No Parking signs are installed. No Parking signs can only be installed for a one week in any work zone.
11. Contractor must have a copy of an approved TMP at the job site at all times. All signage and traffic control devices must be installed as indicated on the TMP.

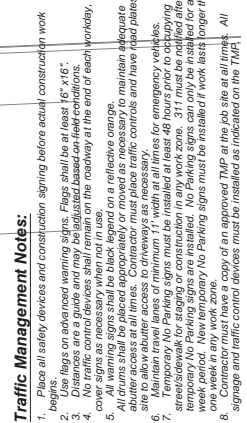


Know what's below  
Call before you dig

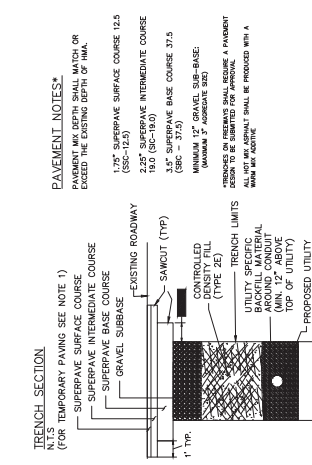
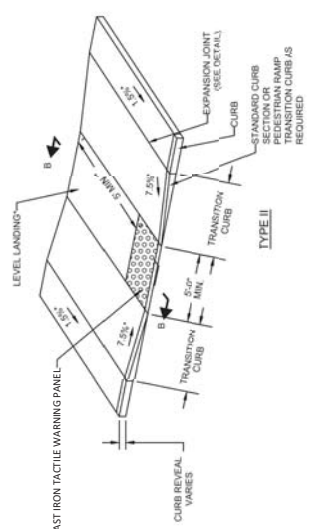
IT'S YOUR TURN TO CALL 811  
BEFORE YOU DIG  
CALL 811-888-UG-SAFE  
OR VISIT 811-UG-SAFE.COM

LEGEND	
	ELECTRIC POLE
	GAS VALVE
	WATER VALVE
	SEWER VALVE
	STORM VALVE
	FIRE VALVE
	CABLE TV
	TELEPHONE
	GAS METER
	WATER METER
	SEWER METER
	STORM METER
	FIRE METER
	CABLE TV METER
	TELEPHONE METER
	GAS METER
	WATER METER
	SEWER METER
	STORM METER
	FIRE METER
	CABLE TV METER
	TELEPHONE METER
	GAS METER
	WATER METER
	SEWER METER
	STORM METER
	FIRE METER
	CABLE TV METER
	TELEPHONE METER
	GAS METER
	WATER METER
	SEWER METER
	STORM METER
	FIRE METER
	CABLE TV METER
	TELEPHONE METER
	GAS METER
	WATER METER
	SEWER METER
	STORM METER
	FIRE METER
	CABLE TV METER
	TELEPHONE METER
	GAS METER
	WATER METER
	SEWER METER
	STORM METER
	FIRE METER
	CABLE TV METER
	TELEPHONE METER
	GAS METER
	WATER METER
	SEWER METER
	STORM METER
	FIRE METER
	CABLE TV METER
	TELEPHONE METER
	GAS METER
	WATER METER
	SEWER METER
	STORM METER
	FIRE METER
	CABLE TV METER
	TELEPHONE METER
	GAS METER
	WATER METER
	SEWER METER
	STORM METER
	FIRE METER
	CABLE TV METER
	TELEPHONE METER
	GAS METER
	WATER METER
	SEWER METER
	STORM METER
	FIRE METER
	CABLE TV METER
	TELEPHONE METER
	GAS METER
	WATER METER
	SEWER METER
	STORM METER
	FIRE METER
	CABLE TV METER
	TELEPHONE METER
	GAS METER
	WATER METER
	SEWER METER
	STORM METER
	FIRE METER
	CABLE TV METER
	TELEPHONE METER
	GAS METER
	WATER METER
	SEWER METER
	STORM METER
	FIRE METER
	CABLE TV METER
	TELEPHONE METER
	GAS METER
	WATER METER
	SEWER METER
	STORM METER
	FIRE METER
	CABLE TV METER
	TELEPHONE METER
	GAS METER
	WATER METER
	SEWER METER
	STORM METER
	FIRE METER
	CABLE TV METER
	TELEPHONE METER
	GAS METER
	WATER METER
	SEWER METER
	STORM METER
	FIRE METER
	CABLE TV METER
	TELEPHONE METER
	GAS METER
	WATER METER
	SEWER METER
	STORM METER
	FIRE METER
	CABLE TV METER
	TELEPHONE METER
	GAS METER
	WATER METER
	SEWER METER
	STORM METER
	FIRE METER
	CABLE TV METER
	TELEPHONE METER
	GAS METER
	WATER METER
	SEWER METER
	STORM METER
	FIRE METER
	CABLE TV METER
	TELEPHONE METER
	GAS METER
	WATER METER
	SEWER METER
	STORM METER
	FIRE METER
	CABLE TV METER
	TELEPHONE METER
	GAS METER
	WATER METER
	SEWER METER
	STORM METER
	FIRE METER
	CABLE TV METER
	TELEPHONE METER
	GAS METER
	WATER METER
	SEWER METER
	STORM METER
	FIRE METER
	CABLE TV METER
	TELEPHONE METER
	GAS METER
	WATER METER
	SEWER METER
	STORM METER
	FIRE METER
	CABLE TV METER
	TELEPHONE METER
	GAS METER
	WATER METER
	SEWER METER
	STORM METER
	FIRE METER
	CABLE TV METER
	TELEPHONE METER
	GAS METER
	WATER METER
	SEWER METER
	STORM METER
	FIRE METER
	CABLE TV METER
	TELEPHONE METER
	GAS METER
	WATER METER
	SEWER METER
	STORM METER
	FIRE METER
	CABLE TV METER
	TELEPHONE METER
	GAS METER
	WATER METER
	SEWER METER
	STORM METER
	FIRE METER
	CABLE TV METER
	TELEPHONE METER
	GAS METER
	WATER METER
	SEWER METER
	STORM METER
	FIRE METER
	CABLE TV METER
	TELEPHONE METER
	GAS METER
	WATER METER
	SEWER METER
	STORM METER
	FIRE METER
	CABLE TV METER
	TELEPHONE METER
	GAS METER
	WATER METER
	SEWER METER
	STORM METER
	FIRE METER
	CABLE TV METER
	TELEPHONE METER
	GAS METER
	WATER METER
	SEWER METER
	STORM METER
	FIRE METER
	CABLE TV METER
	TELEPHONE METER
	GAS METER
	WATER METER
	SEWER METER
	STORM METER
	FIRE METER
	CABLE TV METER
	TELEPHONE METER
	GAS METER
	WATER METER
	SEWER METER
	STORM METER
	FIRE METER
	CABLE TV METER
	TELEPHONE METER
	GAS METER
	WATER METER
	SEWER METER
	STORM METER
	FIRE METER
	CABLE TV METER
	TELEPHONE METER
	GAS METER
	WATER METER
	SEWER METER
	STORM METER
	FIRE METER
	CABLE TV METER
	TELEPHONE METER
	GAS METER
	WATER METER
	SEWER METER
	STORM METER
	FIRE METER
	CABLE TV METER
	TELEPHONE METER
	GAS METER
	WATER METER
	SEWER METER
	STORM METER
	FIRE METER
	CABLE TV METER
	TELEPHONE METER
	GAS METER
	WATER METER
	SEWER METER
	STORM METER
	FIRE METER
	CABLE TV METER
	TELEPHONE METER
	GAS METER
	WATER METER
	SEWER METER
	STORM METER
	FIRE METER
	CABLE TV METER
	TELEPHONE METER
	GAS METER
	WATER METER
	SEWER METER
	STORM METER
	FIRE METER
	CABLE TV METER
	TELEPHONE METER
	GAS METER
	WATER METER
	SEWER METER
	STORM METER
	FIRE METER
	CABLE TV METER
	TELEPHONE METER
	GAS METER
	WATER METER
	SEWER METER
	STORM METER
	FIRE METER
	CABLE TV METER
	TELEPHONE METER
	GAS METER
	WATER METER
	SEWER METER
	STORM METER
	FIRE METER
	CABLE TV METER
	TELEPHONE METER
	GAS METER
	WATER METER
	SEWER METER
	STORM METER
	FIRE METER
	CABLE TV METER
	TELEPHONE METER
	GAS METER
	WATER METER
	SEWER METER
	STORM METER
	FIRE METER
	CABLE TV METER
	TELEPHONE METER
	GAS METER
	WATER METER
	SEWER METER
	STORM METER
	FIRE METER
	CABLE TV METER
	TELEPHONE METER
	GAS METER
	WATER METER
	SEWER METER
	STORM METER
	FIRE METER
	CABLE TV METER
	TELEPHONE METER
	GAS METER
	WATER METER
	SEWER METER
	STORM METER
	FIRE METER
	CABLE TV METER
	TELEPHONE METER
	GAS METER
	WATER METER
	SEWER METER
	STORM METER
	FIRE METER
	CABLE TV METER
	TELEPHONE METER
	GAS METER
	WATER METER
	SEWER METER
	STORM METER
	FIRE METER
	CABLE TV METER
	TELEPHONE METER
	GAS METER
	WATER METER
	SEWER METER
	STORM METER
	FIRE METER
	CABLE TV METER
	TELEPHONE METER
	GAS METER
	WATER METER
	SEWER METER
	STORM METER
	FIRE METER
	CABLE TV METER
	TELEPHONE METER
	GAS METER
	WATER METER
	SEWER METER
	STORM METER
	FIRE METER
	CABLE TV METER
	TELEPHONE METER
	GAS METER
	WATER METER
	SEWER METER
	STORM METER
	FIRE METER
	CABLE TV METER
	TELEPHONE METER
	GAS METER
	WATER METER
	SEWER METER
	STORM METER
	FIRE METER
	CABLE TV METER
	TELEPHONE METER
	GAS METER
	WATER METER
	SEWER METER
	STORM METER
	FIRE METER
	CABLE TV METER
	TELEPHONE METER
	GAS METER
	WATER METER
	SEWER METER
	STORM METER
	FIRE METER
	CABLE TV METER
	TELEPHONE METER
	GAS METER
	WATER METER
	SEWER METER
	STORM METER
	FIRE METER
	CABLE TV METER
	TELEPHONE METER
	GAS METER
	WATER METER
	SEWER METER
	STORM METER
	FIRE METER
	CABLE TV METER
	TELEPHONE METER
	GAS METER
	WATER METER
	SEWER METER
	STORM METER
	FIRE METER
	CABLE TV METER
	TELEPHONE METER
	GAS METER
	WATER METER
	SEWER METER
	STORM METER
	FIRE METER
	CABLE TV METER
	TELEPHONE METER
	GAS METER
	WATER METER
	SEWER METER
	STORM METER
	FIRE METER
	CABLE TV METER
	TELEPHONE METER
	GAS METER
	WATER METER
	SEWER METER
	STORM METER
	FIRE METER
	CABLE TV METER
	TELEPHONE METER
	GAS METER
	WATER METER
	SEWER METER
	STORM METER
	FIRE METER
	CABLE TV METER
	TELEPHONE METER
	GAS METER
	WATER METER
	SEWER METER
	STORM METER
	FIRE METER
	CABLE TV METER
	TELEPHONE METER
	GAS METER
	WATER METER
	SEWER METER
	STORM METER
	FIRE METER
	CABLE TV METER
	TELEPHONE METER
	GAS METER
	WATER METER
	SEWER METER
	STORM METER
	FIRE METER
	CABLE TV METER
	TELEPHONE METER
	GAS METER
	WATER METER
	SEWER METER
	STORM METER
	FIRE METER
	CABLE TV METER
	TELEPHONE METER
	GAS METER
	WATER METER
	SEWER METER
	STORM METER
	FIRE METER
	CABLE TV METER
	TELEPHONE METER
	GAS METER
	WATER METER
	SEWER METER
	STORM METER
	FIRE METER
	CABLE TV METER
	TELEPHONE METER
	GAS METER
	WATER METER
	SEWER METER
	STORM METER
	FIRE METER
	CABLE TV METER
	TELEPHONE METER
	GAS METER

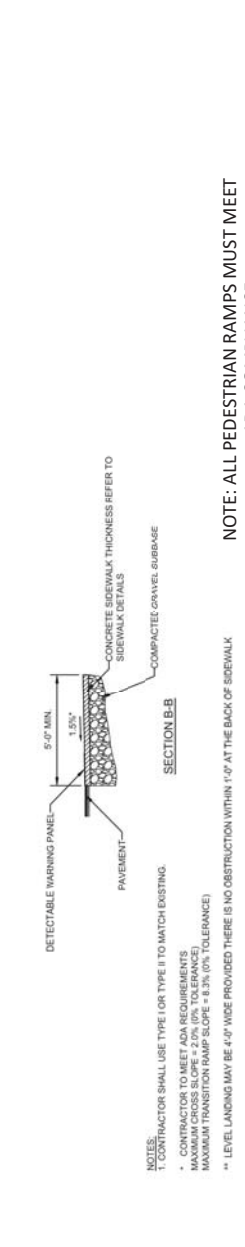


[illegible]

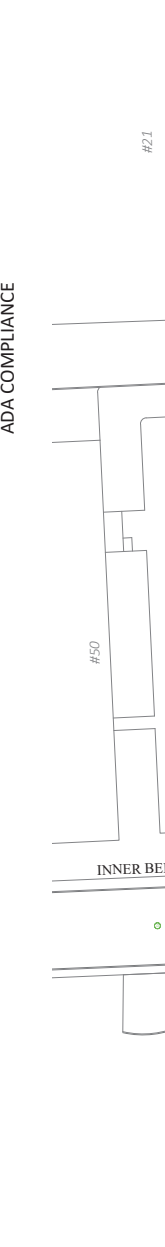




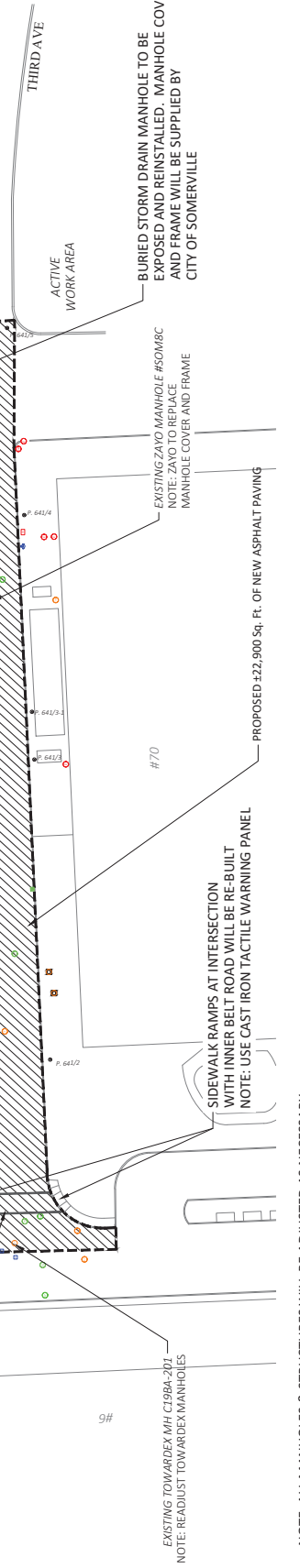
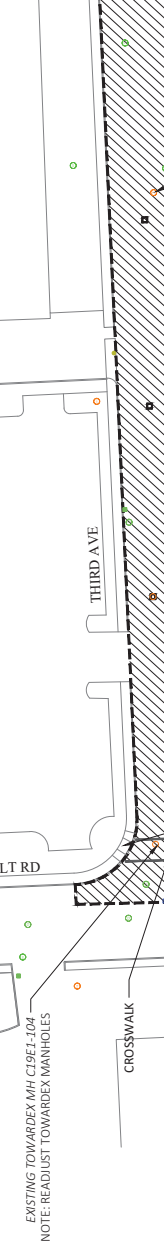
- PAVEMENT NOTES\*
- 1. PAVEMENT MIN. DEPTH SHALL MATCH OR EXCEED THE EXISTING DEPTH OF HMA.
  - 1.75" SUPERPAVE SURFACE COURSE 12.5 (SIC-12.5)
  - 2.0" SUPERPAVE INTERMEDIATE COURSE 18.0 (SIC-18.0)
  - 3.5" SUPERPAVE BASE COURSE 37.5 (SIC-37.5)
  - MINIMUM 12" GRAVEL SUB-BASE (SIC-37.5)
  - MINIMUM 2" ASPHALT SEAL
  - DESIGN TO BE SUBMITTED FOR REVIEW
  - ALL NEW ASPHALT SHALL BE PRODUCED WITH A MIN. AIR CONTENT
- TRENCH LIMITS
- CONTROLLED CURB (TYPE 1E)
  - UTILITY SPECIFIC BACKFILL MATERIAL (MIN. 12" ABOVE TOP OF UTILITY)
  - PROPOSED UTILITY
- NOTES:
- 1. MIN. SAFETY DIA. = 18"
  - 2. THE TOP OF THE COF SHALL BE PLACED TO THE ELEVATION OF THE EXISTING SURFACE. THE COF SHALL BE PLACED AND COMPACTED TO WITHIN 1 1/2 INCHES OF THE EXISTING SURFACE. THE COF SHALL BE PLACED IN TWO LAYERS.
  - 3. MATERIAL WHICH MEETS THE SPECIFICATION FOR GRAVEL BORROW TYPE C (MIXED TYPE C) PLACED AND COMPACTED IN LAYERS NO GREATER THAN 6" MAY BE USED IN PLACE OF THE COF WITH APPROVAL.
  - 4. THE FORGED EDGES OF ALL LONGITUDINAL AND TRANSVERSE SAW CUT JOINTS SHALL BE TREATED WITH NOT POURED RUBBERIZED ASPHALT JOINT SEALANT MEETING MASSDOT SPECIFICATIONS.
  - 5. YELLOW METAL FOIL MARKING TAPE SHALL BE PLACED 18" OVER THE CONDUIT (METAL MARKING TAPE/WRAP SHOULD BE USED FOR NON-METALLIC CONDUIT).
  - 6. FOR ROADWAYS WITH AN EXISTING CURB OR BASE, A REMOVED HIGH EARLY STRENGTH AIR CURB OR CURB WITH AN EXISTING CURB SHALL BE PLACED LAST IN THE TRENCH. THE EXISTING PAVEMENT SHALL BE REPAIRED TO THE EXISTING FINISH WITHIN 14" OF THE BACK OF THE MASSDOT STANDARD SPECIFICATIONS FOR HIGHWAYS AND BRIDGES.
  - 7. SIC 18.0 MAY BE SUBSTITUTED FOR SIC-37.5



- NOTES:
- 1. CONTRACTOR SHALL USE TYPE I OR TYPE II TO MATCH EXISTING.
  - \* CONTRACTOR TO MEET ADA REQUIREMENTS
  - MAXIMUM CROSS SLOPE = 2.0% (2% TOLERANCE)
  - MAXIMUM TRANSITION RAMP SLOPE = 8.3% (TOLERANCE)
  - \*\* LEVEL LANDING MAY BE 4'-0" WIDE PROVIDED THERE IS NO OBSTRUCTION WITHIN 1'-0" AT THE BACK OF SIDEWALK



- NOTE: ALL PEDESTRIAN RAMPS MUST MEET ADA COMPLIANCE



EXISTING TOWARDEX MH C1984-201  
NOTE: READJUST TOWARDEX MANHOLES

EXISTING TOWARDEX MH C1984-201  
NOTE: READJUST TOWARDEX MANHOLES

EXISTING ZAVO MANHOLE #50M/C  
NOTE: ZAVO TO REPLACE MANHOLE COVER AND FRAME

PROPOSED 422,900 SQ. FT. OF NEW ASPHALT PAVING

SIDEWALK RAMPS AT INTERSECTION WITH INNER BELT ROAD WILL BE RE-BUILT  
NOTE: USE CAST IRON TACTILE WARNING PANEL

BURIED STORM DRAIN MANHOLE TO BE EXPOSED AND REINSTALLED. MANHOLE COVER AND FRAME WILL BE SUPPLIED BY CITY OF SOMERVILLE

ACTIVE WORK AREA

THIRD AVE

INNER BELT RD

CROSSWALK

9#

70

641/2

641/3

641/4

641/5

641/6

641/7

641/8

641/9

641/10

641/11

641/12

641/13

641/14

641/15

641/16

641/17

641/18

641/19

641/20

641/21

641/22

641/23

641/24

641/25

641/26

641/27

641/28

641/29

641/30

641/31

641/32

641/33

641/34

641/35

641/36

641/37

641/38

641/39

641/40

641/41

641/42

641/43

641/44

641/45

641/46

641/47

641/48

641/49

641/50

641/51

641/52

641/53

641/54

641/55

641/56

641/57

641/58

641/59

641/60

641/61

641/62

641/63

641/64

641/65

641/66

641/67

641/68

641/69

641/70

641/71

641/72

641/73

641/74

641/75

641/76

641/77

641/78

641/79

641/80

641/81

641/82

641/83

641/84

641/85

641/86

641/87

641/88

641/89

641/90

641/91

641/92

641/93

641/94

641/95

641/96

641/97

641/98

641/99

641/100

LEGEND

1	ELECTRIC POLE	1	STREET LIGHT
2	ELECTRIC POLE	2	STREET LIGHT
3	LAMP POST	3	STREET LIGHT
4	STREET LIGHT	4	STREET LIGHT
5	STREET LIGHT	5	STREET LIGHT
6	STREET LIGHT	6	STREET LIGHT
7	STREET LIGHT	7	STREET LIGHT
8	STREET LIGHT	8	STREET LIGHT
9	STREET LIGHT	9	STREET LIGHT
10	STREET LIGHT	10	STREET LIGHT
11	STREET LIGHT	11	STREET LIGHT
12	STREET LIGHT	12	STREET LIGHT
13	STREET LIGHT	13	STREET LIGHT
14	STREET LIGHT	14	STREET LIGHT
15	STREET LIGHT	15	STREET LIGHT
16	STREET LIGHT	16	STREET LIGHT
17	STREET LIGHT	17	STREET LIGHT
18	STREET LIGHT	18	STREET LIGHT
19	STREET LIGHT	19	STREET LIGHT
20	STREET LIGHT	20	STREET LIGHT
21	STREET LIGHT	21	STREET LIGHT
22	STREET LIGHT	22	STREET LIGHT
23	STREET LIGHT	23	STREET LIGHT
24	STREET LIGHT	24	STREET LIGHT
25	STREET LIGHT	25	STREET LIGHT
26	STREET LIGHT	26	STREET LIGHT
27	STREET LIGHT	27	STREET LIGHT
28	STREET LIGHT	28	STREET LIGHT
29	STREET LIGHT	29	STREET LIGHT
30	STREET LIGHT	30	STREET LIGHT
31	STREET LIGHT	31	STREET LIGHT
32	STREET LIGHT	32	STREET LIGHT
33	STREET LIGHT	33	STREET LIGHT
34	STREET LIGHT	34	STREET LIGHT
35	STREET LIGHT	35	STREET LIGHT
36	STREET LIGHT	36	STREET LIGHT
37	STREET LIGHT	37	STREET LIGHT
38	STREET LIGHT	38	STREET LIGHT
39	STREET LIGHT	39	STREET LIGHT
40	STREET LIGHT	40	STREET LIGHT
41	STREET LIGHT	41	STREET LIGHT
42	STREET LIGHT	42	STREET LIGHT
43	STREET LIGHT	43	STREET LIGHT
44	STREET LIGHT	44	STREET LIGHT
45	STREET LIGHT	45	STREET LIGHT
46	STREET LIGHT	46	STREET LIGHT
47	STREET LIGHT	47	STREET LIGHT
48	STREET LIGHT	48	STREET LIGHT
49	STREET LIGHT	49	STREET LIGHT
50	STREET LIGHT	50	STREET LIGHT
51	STREET LIGHT	51	STREET LIGHT
52	STREET LIGHT	52	STREET LIGHT
53	STREET LIGHT	53	STREET LIGHT
54	STREET LIGHT	54	STREET LIGHT
55	STREET LIGHT	55	STREET LIGHT
56	STREET LIGHT	56	STREET LIGHT
57	STREET LIGHT	57	STREET LIGHT
58	STREET LIGHT	58	STREET LIGHT
59	STREET LIGHT	59	STREET LIGHT
60	STREET LIGHT	60	STREET LIGHT
61	STREET LIGHT	61	STREET LIGHT
62	STREET LIGHT	62	STREET LIGHT
63	STREET LIGHT	63	STREET LIGHT
64	STREET LIGHT	64	STREET LIGHT
65	STREET LIGHT	65	STREET LIGHT
66	STREET LIGHT	66	STREET LIGHT
67	STREET LIGHT	67	STREET LIGHT
68	STREET LIGHT	68	STREET LIGHT
69	STREET LIGHT	69	STREET LIGHT
70	STREET LIGHT	70	STREET LIGHT
71	STREET LIGHT	71	STREET LIGHT
72	STREET LIGHT	72	STREET LIGHT
73	STREET LIGHT	73	STREET LIGHT
74	STREET LIGHT	74	STREET LIGHT
75	STREET LIGHT	75	STREET LIGHT
76	STREET LIGHT	76	STREET LIGHT
77	STREET LIGHT	77	STREET LIGHT
78	STREET LIGHT	78	STREET LIGHT
79	STREET LIGHT	79	STREET LIGHT
80	STREET LIGHT	80	STREET LIGHT
81	STREET LIGHT	81	STREET LIGHT
82	STREET LIGHT	82	STREET LIGHT
83	STREET LIGHT	83	STREET LIGHT
84	STREET LIGHT	84	STREET LIGHT
85	STREET LIGHT	85	STREET LIGHT
86	STREET LIGHT	86	STREET LIGHT
87	STREET LIGHT	87	STREET LIGHT
88	STREET LIGHT	88	STREET LIGHT
89	STREET LIGHT	89	STREET LIGHT
90	STREET LIGHT	90	STREET LIGHT
91	STREET LIGHT	91	STREET LIGHT
92	STREET LIGHT	92	STREET LIGHT
93	STREET LIGHT	93	STREET LIGHT
94	STREET LIGHT	94	STREET LIGHT
95	STREET LIGHT	95	STREET LIGHT
96	STREET LIGHT	96	STREET LIGHT
97	STREET LIGHT	97	STREET LIGHT
98	STREET LIGHT	98	STREET LIGHT
99	STREET LIGHT	99	STREET LIGHT
100	STREET LIGHT	100	STREET LIGHT

NOTE: EXISTING UTILITIES SHOWN ARE APPROXIMATE AND CONTRACTOR SHALL VERIFY THE LOCATION OF ALL PUBLIC AND PRIVATE UTILITIES PRIOR TO BEGINNING ANY EXCAVATION.

CALL BEFORE YOU DIG  
1-800-4-A-SAFE  
ENTER 1-888-UC-SAFE

PREPARED BY: **AXIS ENGINEERING GROUP**

PREPARED FOR: **TOWARDEX**  
YOUR NETWORK SUCCESS STORY.

REV # DATE DESCRIPTION

1	9/13/22	EXTEND PAVEMENT AREA AND MANHOLE STRUCTURES, ADD RAMP DTL
2	9/12/22	ONE RAMP DETAIL AND CROSSWALK

TITLE: PROPOSED REPAVING PLAN

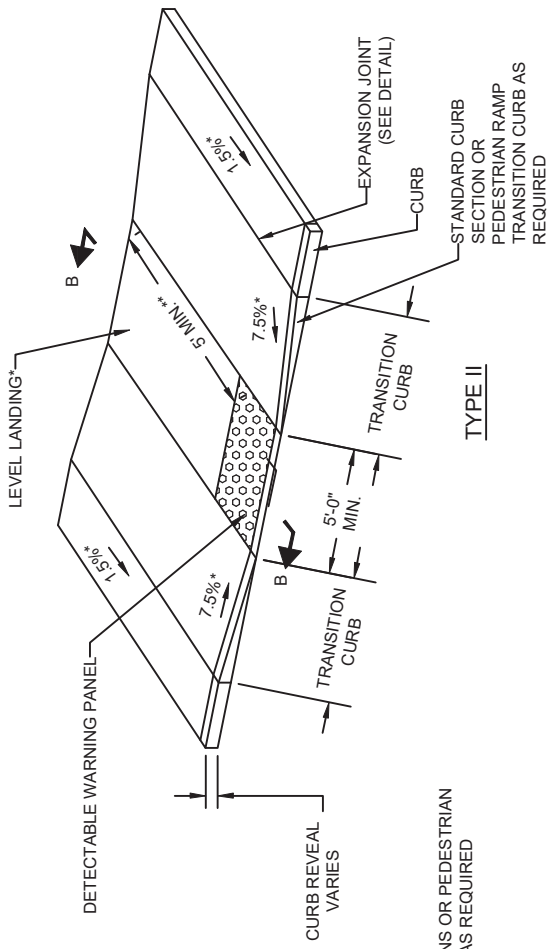
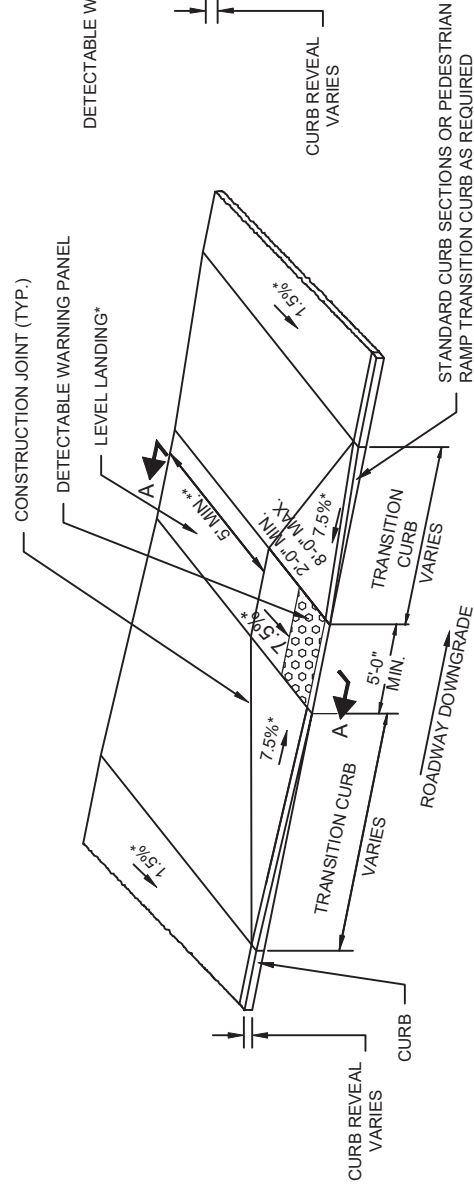
THIRD AVE  
SOMERVILLE, MA

SUBMITTED BY: ABE ENGINEERING  
DRAWN BY: MB  
DATE: 2/10/2022  
AS BUILT

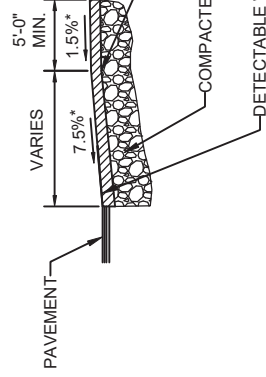
SCALE: 1" = 30'

PROJECT NO: 2021-01

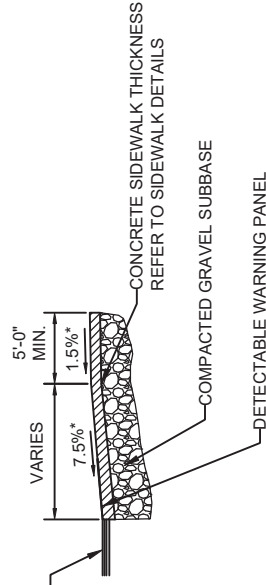




TYPE I



SECTION A-A



SECTION B-B

NOTES:  
1. CONTRACTOR SHALL USE TYPE I OR TYPE II TO MATCH EXISTING.

\* CONTRACTOR TO MEET ADA REQUIREMENTS  
MAXIMUM CROSS SLOPE = 2.0% (0% TOLERANCE)  
MAXIMUM TRANSITION RAMP SLOPE = 8.3% (0% TOLERANCE)

\*\* LEVEL LANDING MAY BE 4'-0" WIDE PROVIDED THERE IS NO OBSTRUCTION WITHIN 1'-0" AT THE BACK OF SIDEWALK



## PEDESTRIAN RAMPS - VARIOUS TYPES

CITY OF SOMERVILLE STANDARD SPECIFICATIONS AND DETAILS

SCALE: N.T.S. DATE: 5/18 OF ISSUE: 02524 SPEC. REF#: 02524 DETAIL NUMBER: R-1.3.0

REVISION: