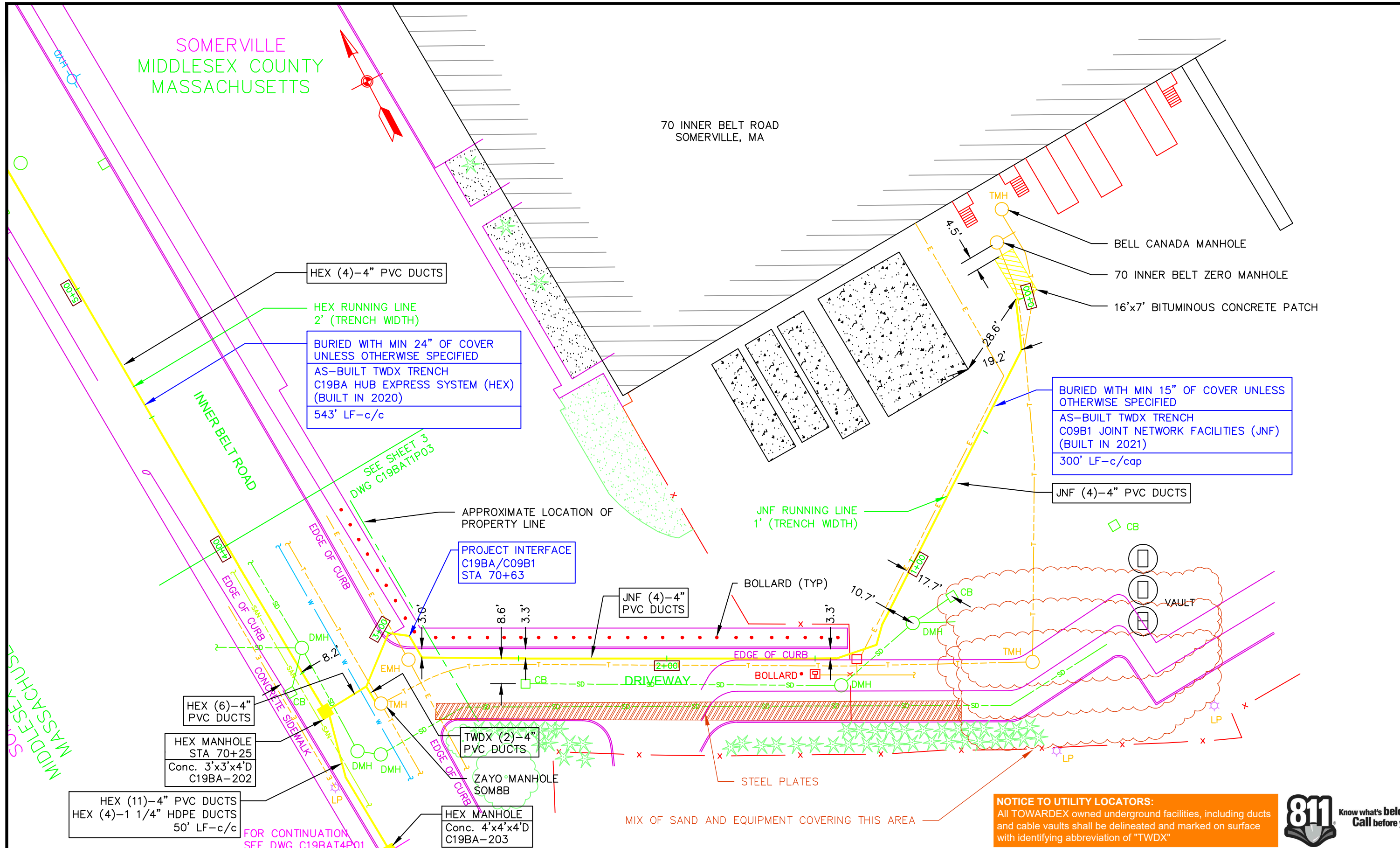


SOMERVILLE
MIDDLESEX COUNTY
MASSACHUSETTS

70 INNER BELT ROAD
SOMERVILLE, MA



HEX (4)-4" PVC DUCTS

HEX RUNNING LINE
2' (TRENCH WIDTH)
BURIED WITH MIN 24" OF COVER
UNLESS OTHERWISE SPECIFIED
AS-BUILT TWDX TRENCH
C19BA HUB EXPRESS SYSTEM (HEX)
(BUILT IN 2020)
543' LF-c/c

BELL CANADA MANHOLE

70 INNER BELT ZERO MANHOLE

16'x7' BITUMINOUS CONCRETE PATCH

BURIED WITH MIN 15" OF COVER UNLESS
OTHERWISE SPECIFIED
AS-BUILT TWDX TRENCH
C09B1 JOINT NETWORK FACILITIES (JNF)
(BUILT IN 2021)
300' LF-c/cap

JNF (4)-4" PVC DUCTS

JNF RUNNING LINE
1' (TRENCH WIDTH)

PROJECT INTERFACE
C19BA/C09B1
STA 70+63

JNF (4)-4" PVC DUCTS

BOLLARD (TYP)

EDGE OF CURB

BOLLARD

DRIVEWAY

EDGE OF CURB

DMH

DMH

DMH

DMH

DMH

DMH

DMH

DMH

DMH

DMH

DMH

DMH

HEX (6)-4" PVC DUCTS

HEX MANHOLE
STA 70+25
Conc. 3'x3'x4'D
C19BA-202

HEX (11)-4" PVC DUCTS
HEX (4)-1 1/4" HDPE DUCTS
50' LF-c/c

FOR CONTINUATION
SEE DWG C19BAT4P01

TWDX (2)-4" PVC DUCTS

ZAYO MANHOLE
SOM8B

HEX MANHOLE
Conc. 4'x4'x4'D
C19BA-203

CB

CB

CB

VAULT

TMH

DMH

DMH

DMH

DMH

DMH

DMH

DMH

DMH

DMH

DMH

DMH

DMH

DMH

DMH

NOTICE TO UTILITY LOCATORS:
All TOWARDEX owned underground facilities, including ducts and cable vaults shall be delineated and marked on surface with identifying abbreviation of "TWDX"



Y:\IP Planning\HubExpress (HEX) Program\As Built System Diagrams\C19BATIP99.dwg
Nov 14, 2021 - 4:15pm by gkeyes

PREPARED BY:



PREPARED FOR:



PROJECT TITLE:

AS-BUILT CONDUIT PLACEMENT PLAN
70 INNER BELT ROAD
SOMERVILLE, MA 02143

SHEET NUMBER:

2

OF 4 SHEETS

Designed by J. CONNOR | Checked by J. KENNEDY | Date 2/3/2021

Scale: FEET

CONDUIT RECORD PLAN